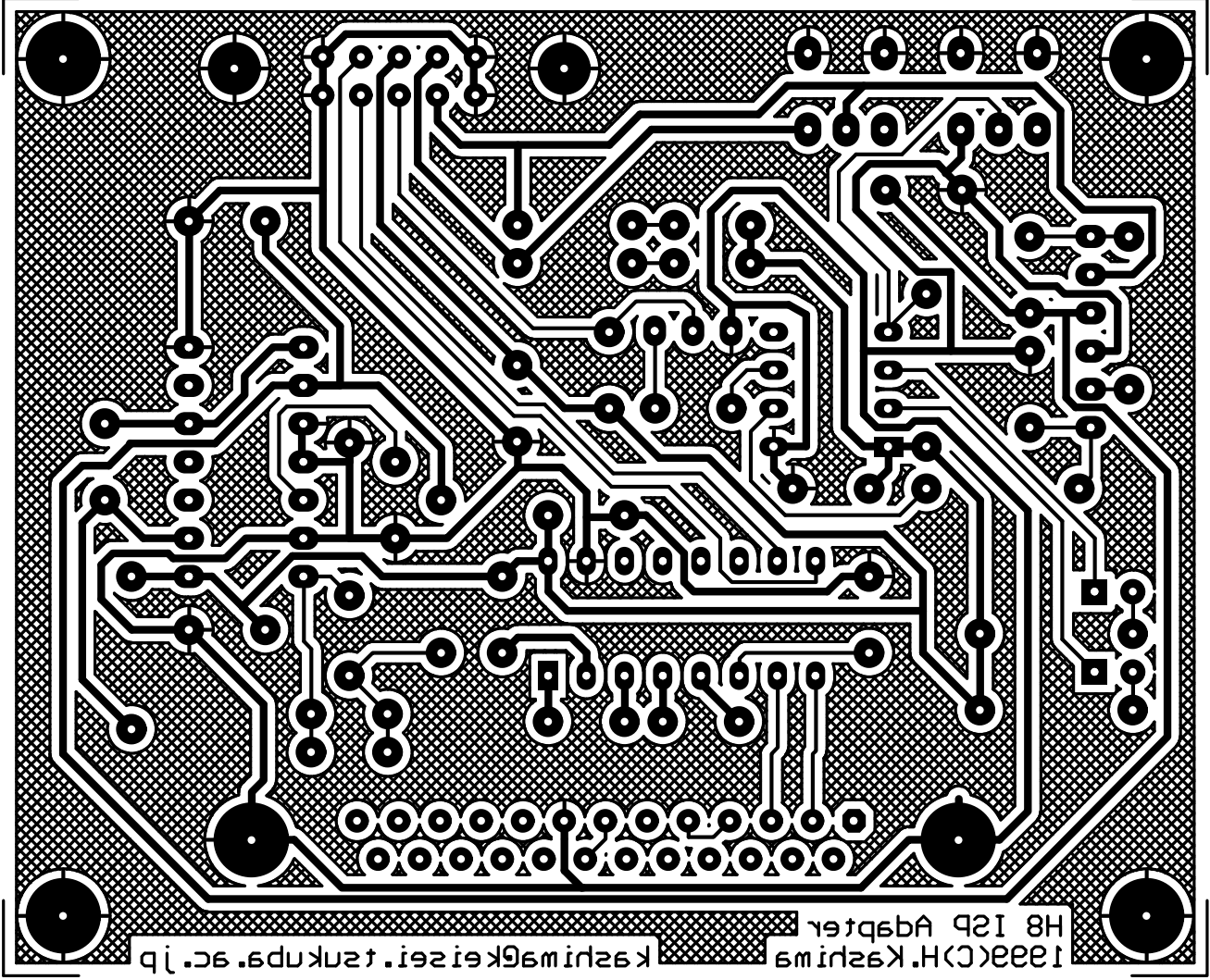
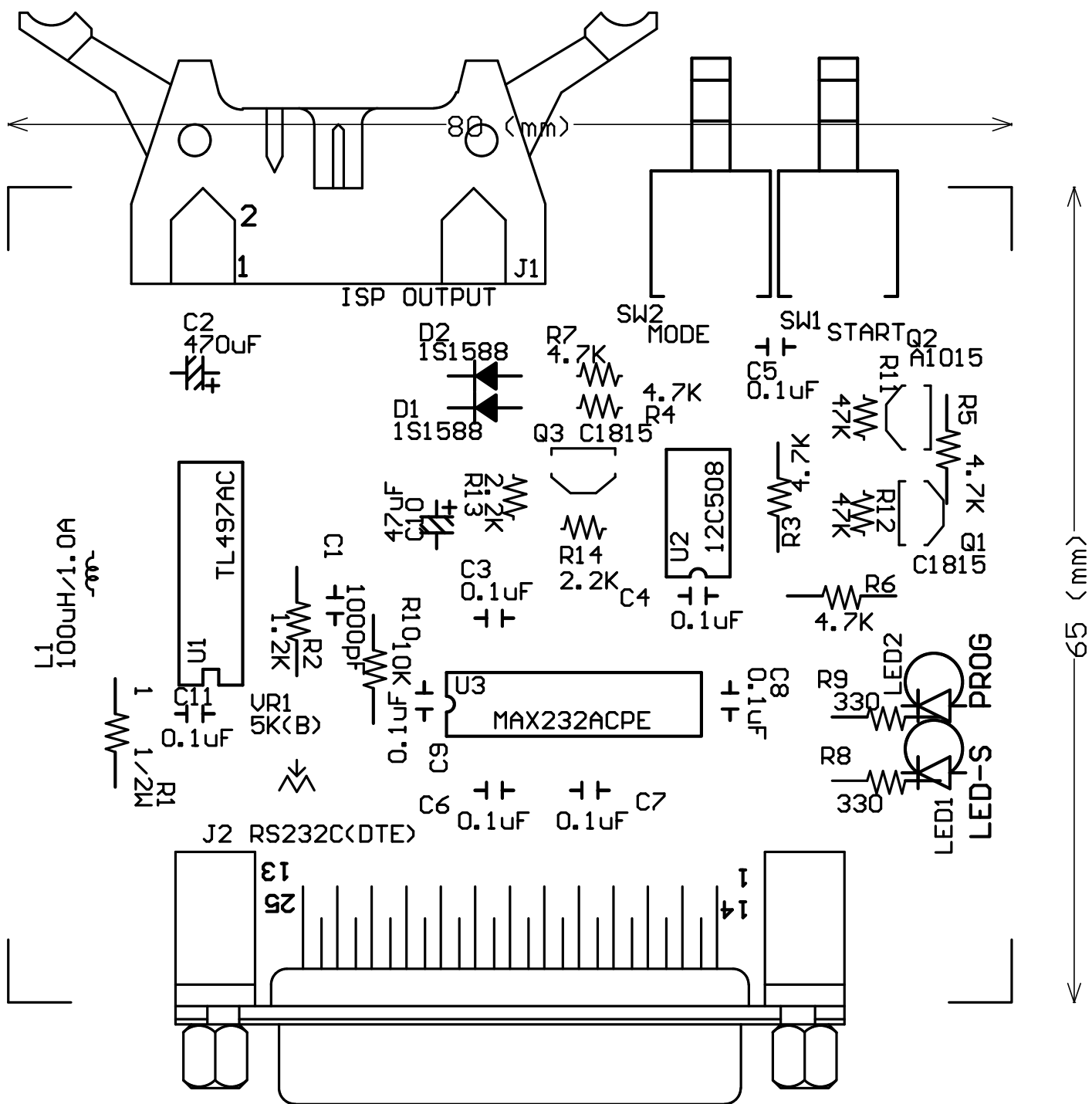


80 (mm)



65 (mm)



L1  
100uH/1.0A

C2  
470uF

D1  
1S1588

D2  
1S1588

R7  
4.7K

R4  
4.7K

SW2  
MODE

C5  
0.1uF

SW1  
START

R1  
47K

R2  
47K

R3  
4.7K

R5  
4.7K

R6  
4.7K

U2  
TL497AC

R2  
1.2K

C1  
1000PF

C10  
0.1uF

R13  
2.2K

R14  
2.2K

U4  
12C508

C4  
0.1uF

R6  
4.7K

R1  
1/2M

C11  
0.1uF

UR1  
5K(B)

R10  
10K

C9  
0.1uF

C6  
0.1uF

C7  
0.1uF

C8  
0.1uF

R8  
330

R9  
330

J2 RS232C(DTE)

13

25

1

4

LED1 S-LED

LED2 PROG